



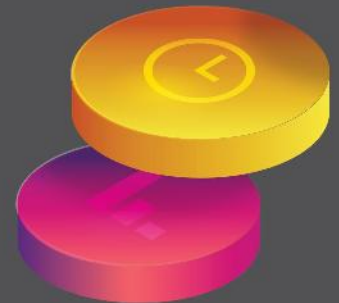
SEBCO is a leading global Bitumen supplier which was founded in 2008. We supply different grades of Bitumen, Waterproofing Membrane and other oil products in various packages to a wide range of countries all over the world.



2008



Our business has prospered by questioning the status quo. As we have constructed our business on solid grounds of high quality products, competitive pricing, on time delivery and efficient logistic services, SEBCO has become known as a reliable supplier in international bitumen market and the number of our customers is increasing at a startling pace.



Benefiting from a skillful staff and extensive expertise in commercial, financial and logistic affairs, we provide our customers with a professional experience.

---

We strive for excellence in meeting Bitumen growing demand and satisfying our customers. We supply different types of Bitumen including Penetration Grades, Viscosity Grades , Performance Grades and Cut Back Grades in a variety of packages including bulk, different size of drums, poly bags, Flexi bags and carton.



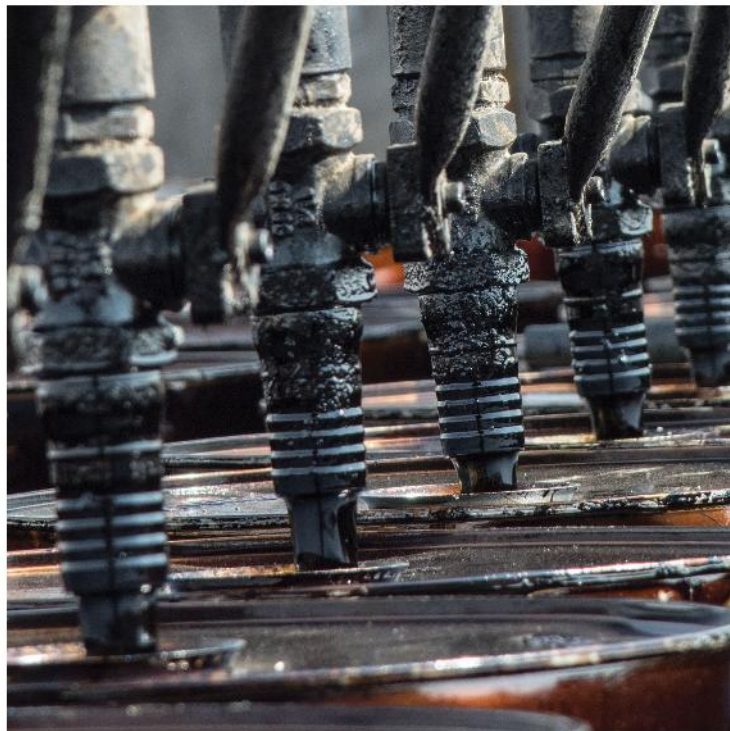


We believe that  
YOU DESERVE THE BEST!



# PRODUCTS





Bitumen



Solvents



Slack Wax



Waterproofing  
Membrane



Paraffin Wax



Base Oil



Urea  
(Granole & Prilled)



# BITUMEN PRODUCTS

## Viscosity Grades (VG)

VG10  
VG20  
VG30  
VG40

## Performance Grades (PG)

PG 52-10	PG 64-16
PG 52-16	PG 64-22
PG 52-22	PG 70-10
PG 58-10	PG 70-16
PG 58-16	PG 70-22
PG 58-22	PG 76-10
PG 64-10	

## Oxidized Grades (Penetration Grades)

10/20	85/100
40/50	90/15
50/70	100/120
60/70	120/150
80/100	200/300

## Cutback Grades

SC-30	MC-30
SC-70	MC-70
SC-250	MC-250
SC-800	MC-800
SC-3000	MC-3000
	RC-30
	RC-70
	RC-250
	RC-800
	RC-3000





international  
bitumen  
market

## Technical Specification of Penetration Grades

Analysis	Unit	40/50	60/70	80/100	85/100	Test Method
		Limit	Limit	Limit	Limit	
Density@25°C	Kg/m <sup>3</sup>	1010-1060	1010-1060	1000-1050	1000-1050	ASTM D7 or D3289
Penetration@25°C	mm/10	40-50	60-70	80-100	85-100	ASTM D5
Softening Point	°C	52-60	46 Min	42 Min	42 Min	ASTM D36
Ductility@25°C	cm	100 Min				ASTM D113
Loss on heating	Wt%	0.2 Max	0.2 Max	0.5 Max	0.5 Max	ASTM D6
Drop in Penetration after heating	%	20 Max				ASTM D5
Flash Point	°C	232 Min				ASTM D92
Solubility in Trichloroethylene	Wt%	99.0 Min				ASTM D2042
Spot Test	--	Negative				AASHTO T102
Viscosity@60°C	P	4000±800	2000±400	1000±200	1000±200	ASTM D2171
Viscosity@135°C	cSt	400 Min	300 Min	250 Min	250 Min	ASTM D2170





## Technical Specification of Viscosity Grades

Analysis	VG10	VG20	VG30	VG40	Test Method
	Limit	Limit	Limit	Limit	
Absolute Viscosity at 60°C, Poises	Min. 800	Min. 1600	Min. 2400	Min. 3200	IS 1206 (Part 2)
Kinematic Viscosity at 135°C, cst	Min. 250	Min. 300	Min. 350	Min. 400	IS 1206 (Part 3)
Flash Point (Cleveland Open Cup), °C	Min. 220				IS 1209
Solubility in Trichloroethylene, %	Min. 99				IS 1206
Softening Point (R&B) , °C	Min. 40	Min. 45	Min. 47	Min. 50	IS 1205
Penetration@25°C , 0.1 mm 100 gm, 5 Sec.	80-100	60-80	50-70	40-60	IS 1203
<b>Test on Residue from thin film oven tests /RTFOT</b>					
Viscosity Ratio at 60°C	Max. 4.0				IS 1206 (Part 2)
Ductility at 25°C, Cm, after thin film over test	Min. 75	Min. 50	Min. 40	Min. 25	IS 1208
Specific Gravity@27/27°C	Min. 0.99				IS 1202







## SERVICES

Benefiting from a skillful team and an extensive experience in export, we prepare all required documents to make trade as smooth as possible for our customers.

With the ever changing landscape, you can count on SEBCO group as an international bitumen supplier to provide you with the most comprehensive solution for all required logistic services such as Packing, Local transportation , Stuffing Containers, Inspection, Customs affairs and international transport with top quality services and competitive pricing.



Packing



Production  
&  
Supply







---

Benefiting from two drumming plants with the total annual capacity of 500,000 MT, skillful staff and extensive expertise in Bitumen packing alongside using high quality steel sheets produced by well-known steel manufacturers, ensures the superb quality of SEBCO drums.







● 500,000 MT

اسپادانا قیر پاسار ۵۰  
SBP

In order to meet our customers' requirement, SEBCO drumming facilities have been designed to be capable of producing standard and custom-made packages.

- Producing different sizes of 150 Kg, 180Kg, 200 Kg , 240 Kg and any other size as per customer's request
- Drum production with customer's embossed logo
- Palletized drums

Capacity (Kg)	150 ± 2	180 ± 2	200 ± 2	225 ± 2
Empty Drum Weight (Kg)	8.3 ± 0.3	9.5 ± 0.3	10.4 ± 0.3	11.1 ± 0.3
Gross Weight (Kg)	158 ± 2	190 ± 2	210 ± 2	240 ± 2
Height (mm)	820	980	900	980
Diameter (mm)	505	505	560	560
Body Thickness (mm)	0.6	0.6	0.6	0.6
Top/Base Thickness (mm)	0.6	0.6	0.6	0.6







سولہا کو پائلو ایچ  
SBP

سولہا کو پائلو ایچ  
SBP

سولہا کو پائلو ایچ  
SBP

سولہا کو پائلو ایچ  
SBP

RAYANA





Bulk Tankers

Bulk Vessels





## Poly Bag

Polybags are considered as the most efficient and environmentally friendly solution to bitumen packing requirement. SEBCO supplies Bitubags in two sizes of 300 Kg and 1,000 Kg.






موسسه تحقیقات  
و آزمایشگاه  
کشاورزی  
و منابع طبیعی  
ایران



To assure our customers on cargo quality and quantity, all supplied cargoes are inspected by Geo Chem, SGS, Bureau Veritas or any other nominated inspection party by the clients.

 **ATLAS INSPECTION SERVICES CO. (Ltd)**

ORIGINAL

Certificate No : LC-19R1010/AIS  
Date : 02<sup>nd</sup> August 2019

**CERTIFICATE OF QUANTITY**

Commodity	: BIT
Quantity	: 419
Shipper	: ESR
	: PAS
Consignee	: WB
Notify Party	: WB
Vessel	: MLI
Port of Loading	: BAQ
Port of Discharge	: SH
B/L No	: AA
B/L date	: 02 <sup>nd</sup>

The quantity of BITUMEN GRAD 60/70 "ALLIANCE" at BANDAR ABU SALEH survey and on which is

Issued at Tehran on 02<sup>nd</sup> August 2019

Atlas Inspection Services, Ltd

No 177, Nelson Mandela/Ahmadzadeh, 4th Floor  
Tel: (+9821) 22019292 Fax: (+9821) 22090970

SGS

Inspection Report No: 19371865 Page 4 of 5

Part 02: (Bitumen Grade 60/70)

**Marking (part 02 -Grade 60/70):**  
Following marking were printed on the drums:  
Type 5) Painted marking

JEY OIL CO  
6070 179/98

Note:  
At the time of inspection, the variable figures such as 179/98 were observed in above mentioned painted marking.  
For item No 1-13 of grade 60/70

Type 8) Engraved marking on top of drums

JEY OIL CO R  
A  
N

Note:  
For item No 1-13 of grade 60/70

**Packing:**  
The commodity was poured in the new steel drums with black appearance. Each drum had a lid in the top side. Amongst the randomly inspected drums, following figures were obtained for their dimensions:  
Dia of drums : 50.0 +/- 0.2 Cm  
Height of drums : 98 +/- 0.5 Cm  
Dia of lid : 19 +/- 0.5 Cm

**Stuffing drums into containers:**  
Bitumen drums were discharged from loaded trucks by means of a forklift with adequate man power. Each take of forklift discharged 8 or 12 drums which were directly stuffed into containers. In each container two tiers of drums were stuffed, in first tier 55 and second tier 55 drums were stuffed (Totally 110 drums in each container).

SGS  
SGS Iran Limited  
Minerals Division

Cont... p.5

SGSPAPER  
19371865



laboratory

SEBCO provides comprehensive logistic services throughout the entire areas of logistics such as domestic transport , stuffing, inspection, customs clearance , cross stuffing and marine transport.

Anchored in the TOP spirit of Trust, Openness and Passion, we continually strive to provide the best business experience for our customers and business partners.

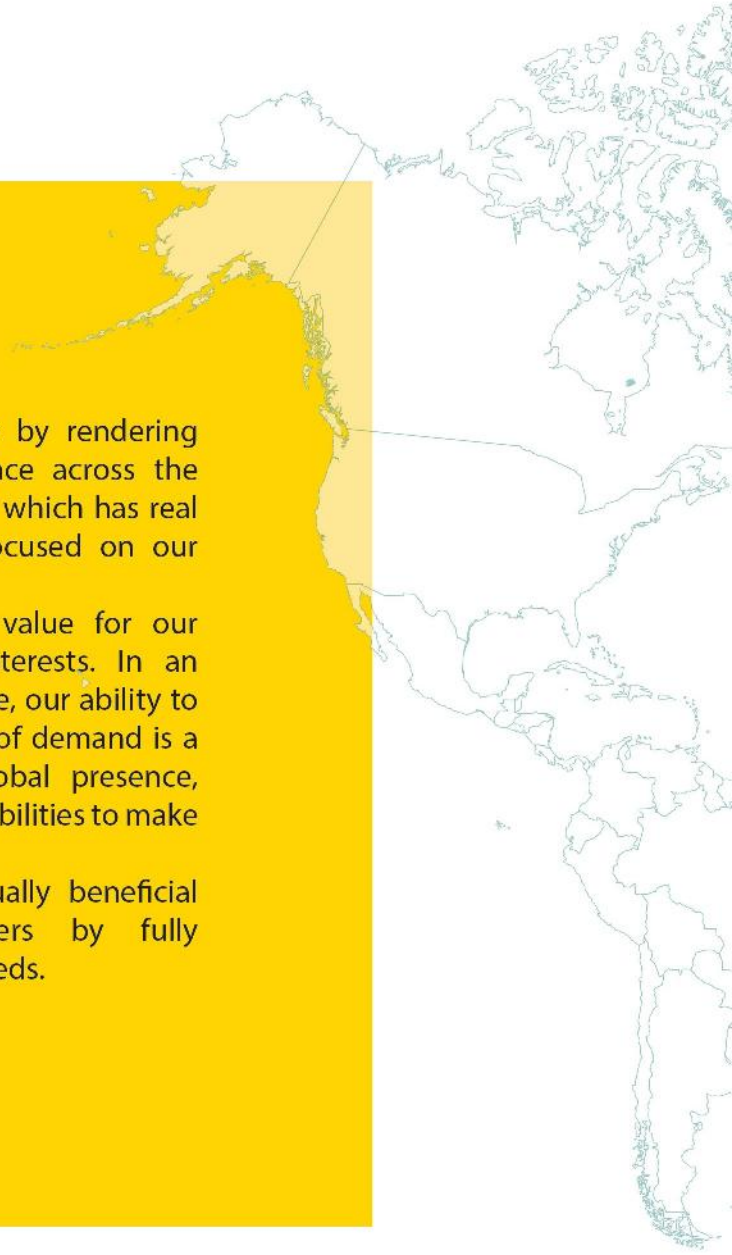
We creat and develop active trade routes. We have built a global business in pursuit of one basic task "Advancing traded". We approach that single mindedly, bringing all our energy and resources to bear.









A stylized world map is positioned on the right side of the page. The map is rendered in a light blue outline. A large yellow rectangular area is overlaid on the map, covering the Americas (North and South America) and extending into the Pacific Ocean. A small blue dot is located in the Pacific Ocean, west of the Americas. Two thin lines connect the top and bottom of this yellow area to the map's outline.

We add value to the global trade by rendering exceptional service and performance across the supply chain. We cherish that status which has real business benefits and keeps us focused on our customers' requirements.

We focus on creating long-term value for our customers by prioritizing their interests. In an increasingly competitive marketplace, our ability to respond swiftly to shifting patterns of demand is a key differentiator. We use our global presence, market knowledge and logistics capabilities to make trade flow better.

We work to develop strong, mutually beneficial relationships with our customers by fully understanding and meeting their needs.











Our focus is on growing prosperity and building long-term sustainable value. We are committed to operating our business in a responsible way. Responsible trade drives economic progress and strengthens society. We are leveraging our experience and expertise to embed responsibility in our business. Taking this approach makes commercial sense. Maintaining high standards is a prerequisite. We have adopted a rigorous framework to minimize and mitigate negative impacts for people and the environment.



[www.sebco.co](http://www.sebco.co)

-  Sales Office: No. 57 ,West Vanak St.,Sheikh Bahaei Sq. ,Tehran ,Iran.
-  Tel: +98 21 880 60 870      +98 21 880 60 871
-  Mobile: 0098 912 888 4204 (WhatsApp ,Telegram ,Viber , Wechat , QQ )
-  E-mail: [sales@sebco.co](mailto:sales@sebco.co)